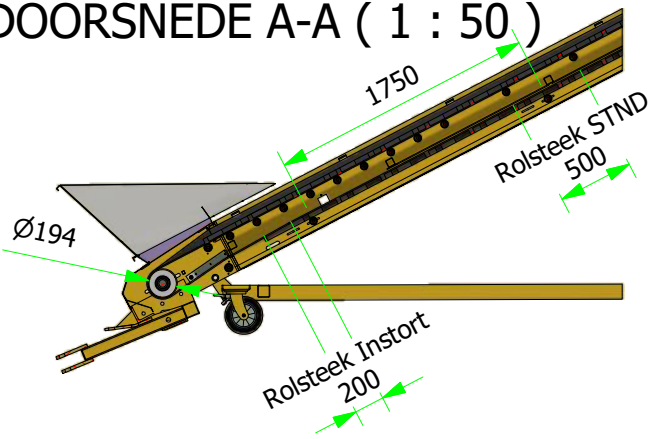
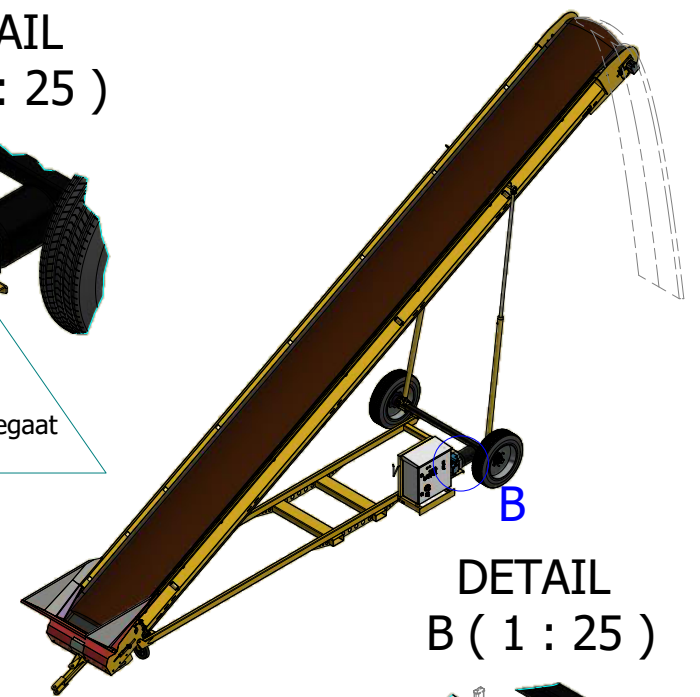
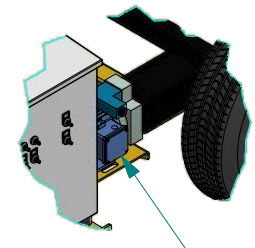


DOORSNEDE A-A ( 1 : 50 )

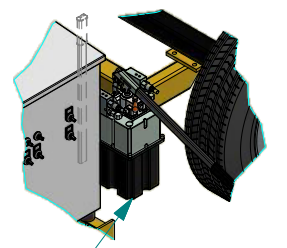


TM315A50 (VK40)  
Vermogen: 5,5[kW]  
Snelheid: 1,25[m/s]  
Bekleding: Nee  
Sperlager: Ja

DETAIL  
B ( 1 : 25 )



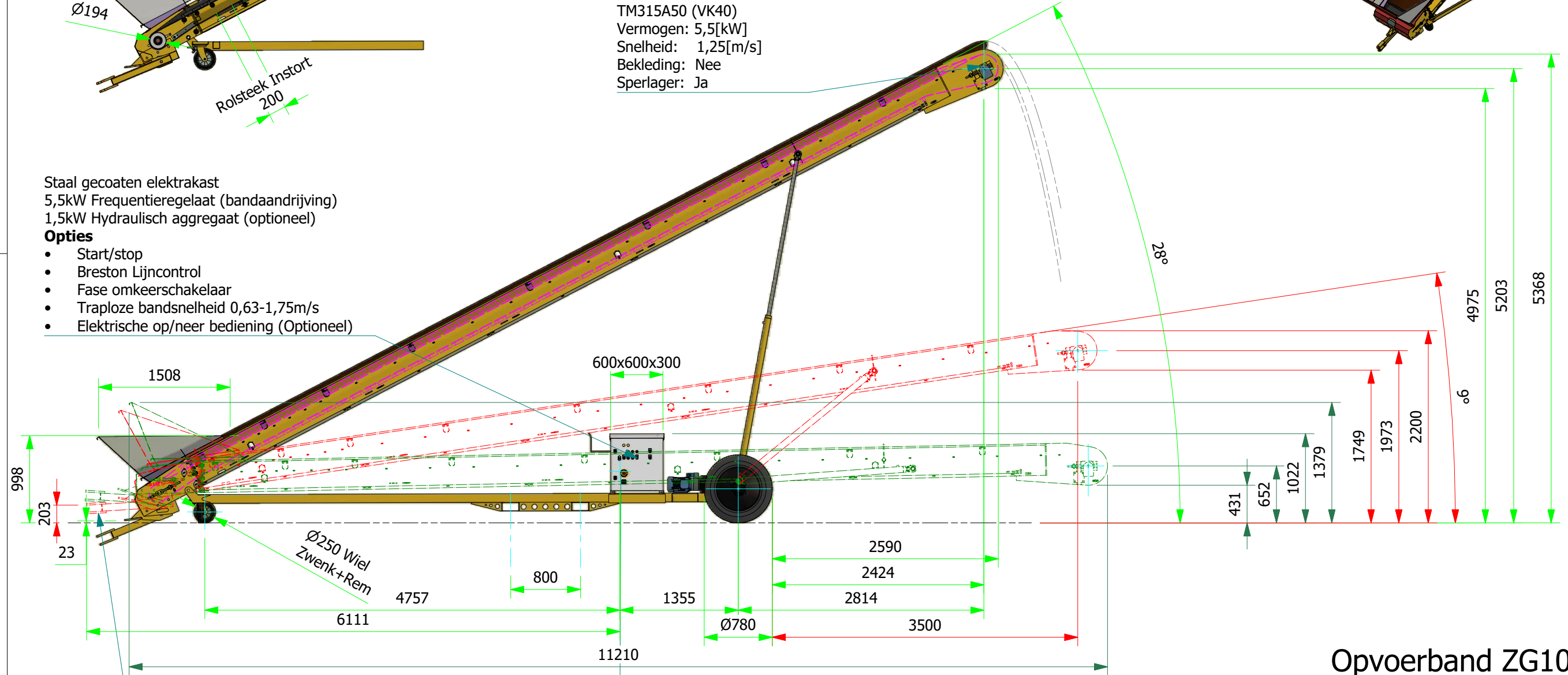
DETAIL  
B ( 1 : 25 )



Staal gecoaten elektrakast  
5,5kW Frequentieregelaat (bandaandrijving)  
1,5kW Hydraulisch aggregaat (optioneel)

**Opties**

- Start/stop
- Breston Lijncontrol
- Fase omkeerschakelaar
- Traploze bandsnelheid 0,63-1,75m/s
- Elektrische op/neer bediening (Optioneel)



2000 kg (ledig gewicht)  
2620 kg (bij volle band)

Trekboom afneembaar  
Oplegdruk +/-350-400kG

Opvoerband ZG100-10 5,5kW

